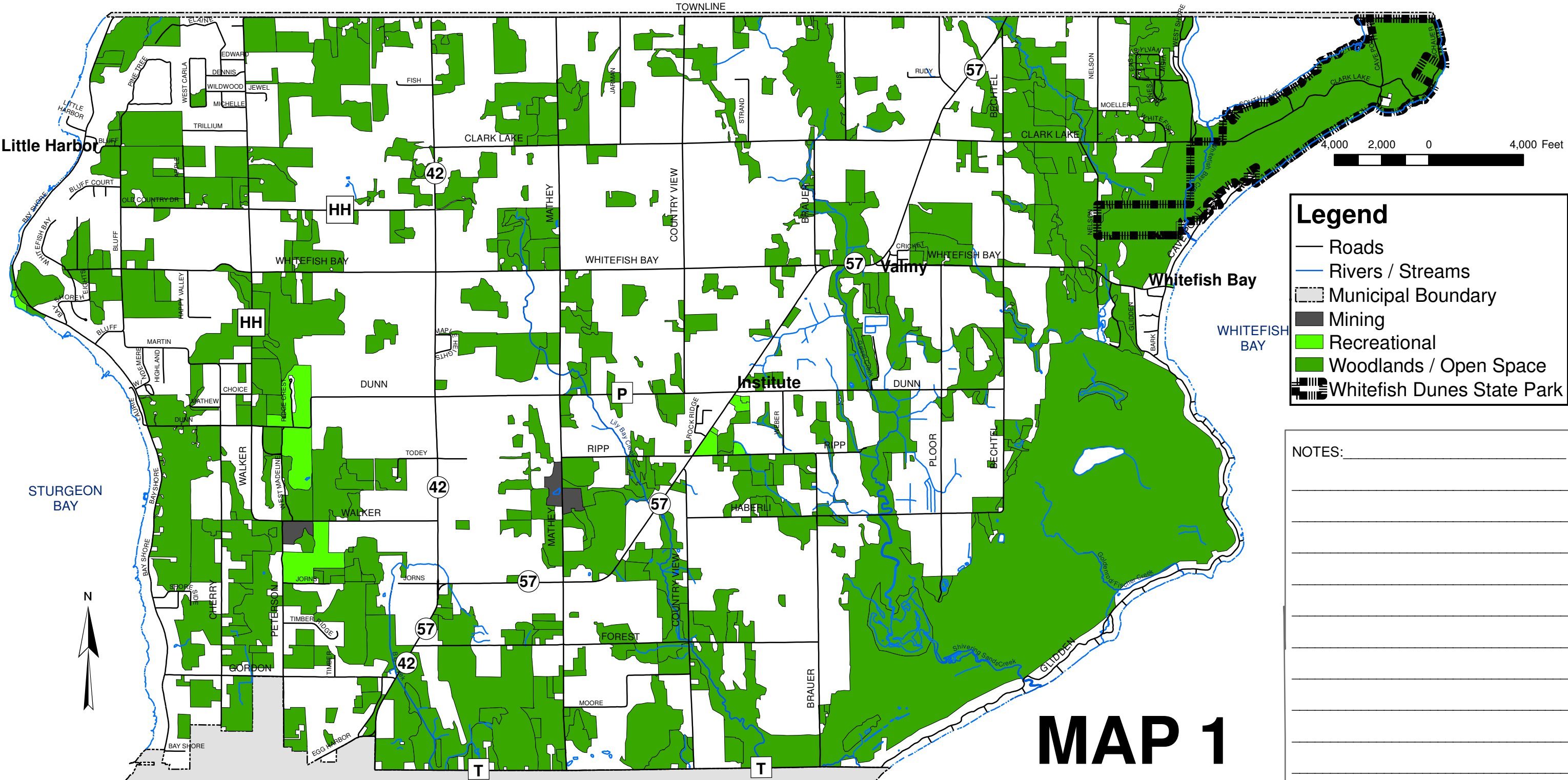


COGNITIVE MAPPING EXERCISE TOWN OF SEVASTOPOL



Legend

- Roads
- Rivers / Streams
- - - Municipal Boundary
- Mining
- Recreational
- Woodlands / Open Space
- Whitefish Dunes State Park

NOTES: _____

MAP 1

OMNI
ASSOCIATES

PROJECT: # M1236A06
DATE: 01-03-2007
DRAWN BY: KAL
REVISED:

ONE SYSTEMS DRIVE APPLETON, WI 54911
PHONE: (920) 735-6900 FAX: (920) 630-6100

Location: F:\Municipal\Jobs\M1236A06(Sevastopol)\GIS\DRAWINGS\Exercise_11x17.MXD
Source: Door County