

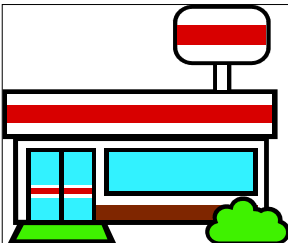
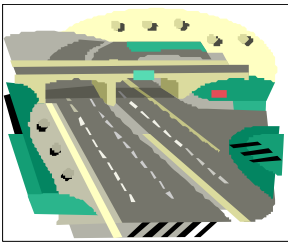
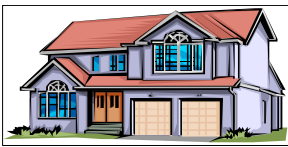
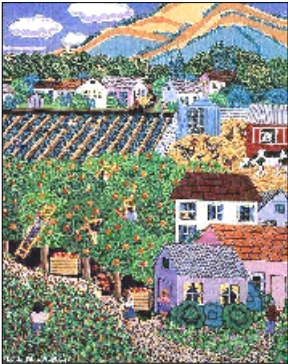
What Will Black Creek Look Like in 20 Years?

Who will live in the area?

Where will they live?

Will there still be farming operations in 20 years?

Where will businesses & industry be located?



To answer these questions and many others, the Town and Village of Black Creek Plan Commission are developing a Smart Growth Comprehensive Plan. Once completed, the plan will serve as the guide used by the Town and Village to make decisions with respect to future development. Your help is needed to ensure that the plan reflects your ideas, concerns and issues about the future of the town.

SMART GROWTH PLANNING – WHAT IS IT?

The Wisconsin Smart Growth Law (1999 Wisconsin Act 9) requires that all communities – cities, villages, towns, counties – that want to have a say in land use issues (i.e. subdivision development, farmland preservation, zoning, etc.) adopt a comprehensive plan by 2010. The plan must address 9 required plan elements:

- (1) Issues and Opportunities
- (2) Housing
- (3) Transportation
- (4) Utilities and Community Facilities
- (5) Agricultural, Natural & Cultural Resources
- (6) Economic Development
- (7) Land Use
- (8) Intergovernmental Cooperation
- (9) Implementation

HOW CAN YOU GET INVOLVED?

Participate in a Planning Meeting. Meeting announcements are provided on this web page.

This document was created with Win2PDF available at <http://www.daneprairie.com>.
The unregistered version of Win2PDF is for evaluation or non-commercial use only.