

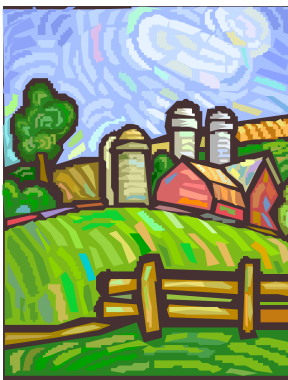
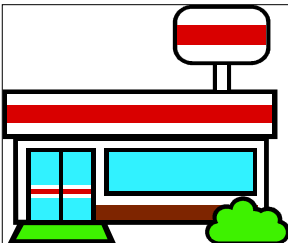
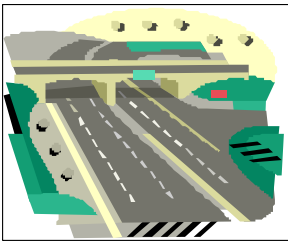
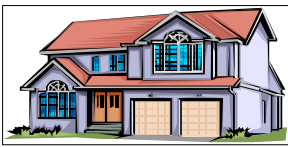
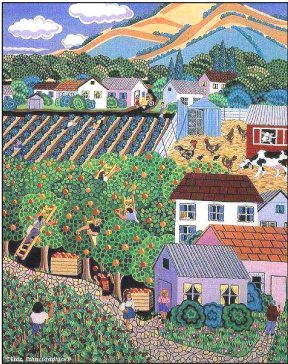
# What Will the Village of Slinger Look Like in 20 Years?

**Who will live in the Village?**

**Where will they live?**

**Where will businesses & industry be located?**

---



To answer these questions and many others, the Village of Slinger Planning Commission is developing a Smart Growth Comprehensive Plan. Once completed, the plan will serve as the guide used by the Village to make decisions with respect to future development in the Village of Slinger. Your help is needed to ensure that the plan reflects your ideas, concerns and issues about the future of the Village.

## **SMART GROWTH PLANNING – WHAT IS IT?**

The Wisconsin Smart Growth Law (1999 Wisconsin Act 9) requires that all communities – cities, villages, Villages, counties – that want to have a say in land use issues (i.e. subdivision development, farmland preservation, zoning, etc.) adopt a comprehensive plan by 2010. The plan must address 9 required plan elements:

- (1) Issues and Opportunities
- (2) Housing
- (3) Transportation
- (4) Utilities and Community Facilities
- (5) Agricultural, Natural & Cultural Resources
- (6) Economic Development
- (7) Land Use
- (8) Intergovernmental Cooperation
- (9) Implementation

## **HOW CAN YOU GET INVOLVED?**

Participate in a public meeting. Review Draft Chapters on this Web Site and provide feedback. All residents are encouraged to attend and participate!