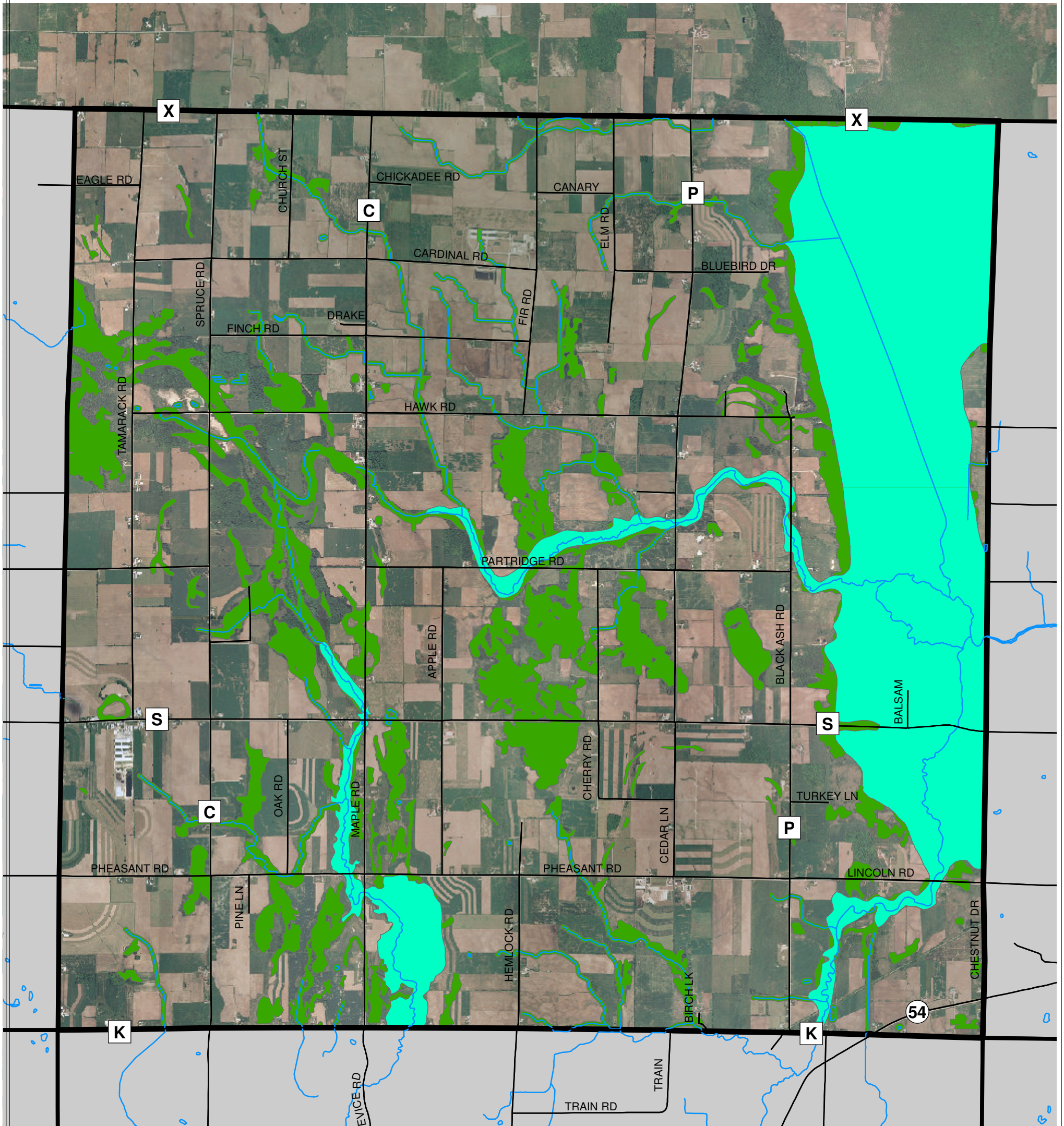


# TOWN OF LINCOLN

## NATURAL FEATURES



4,000 2,000 0 4,000 Feet



PROJECT # M11150A04  
DATE: 05/15/06  
DRAWN BY: KAL  
REVISED:

### LEGEND

- NON-PARTICIPATING COMMUNITIES
- ENVIRONMENTAL CORRIDORS
- FLOODPLAIN
- ROADS
- RIVERS / STREAMS

LOCATION- F:\Municipal\Jobs\M11150A04\GIS\DRAWINGS\Lincoln\Natural\_11x17.mxd  
SOURCE: Kewaunee County  
Bay Lake Regional Planning Commission  
Wisconsin DOT