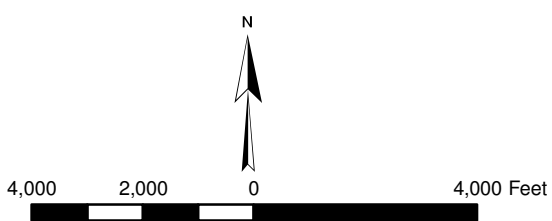
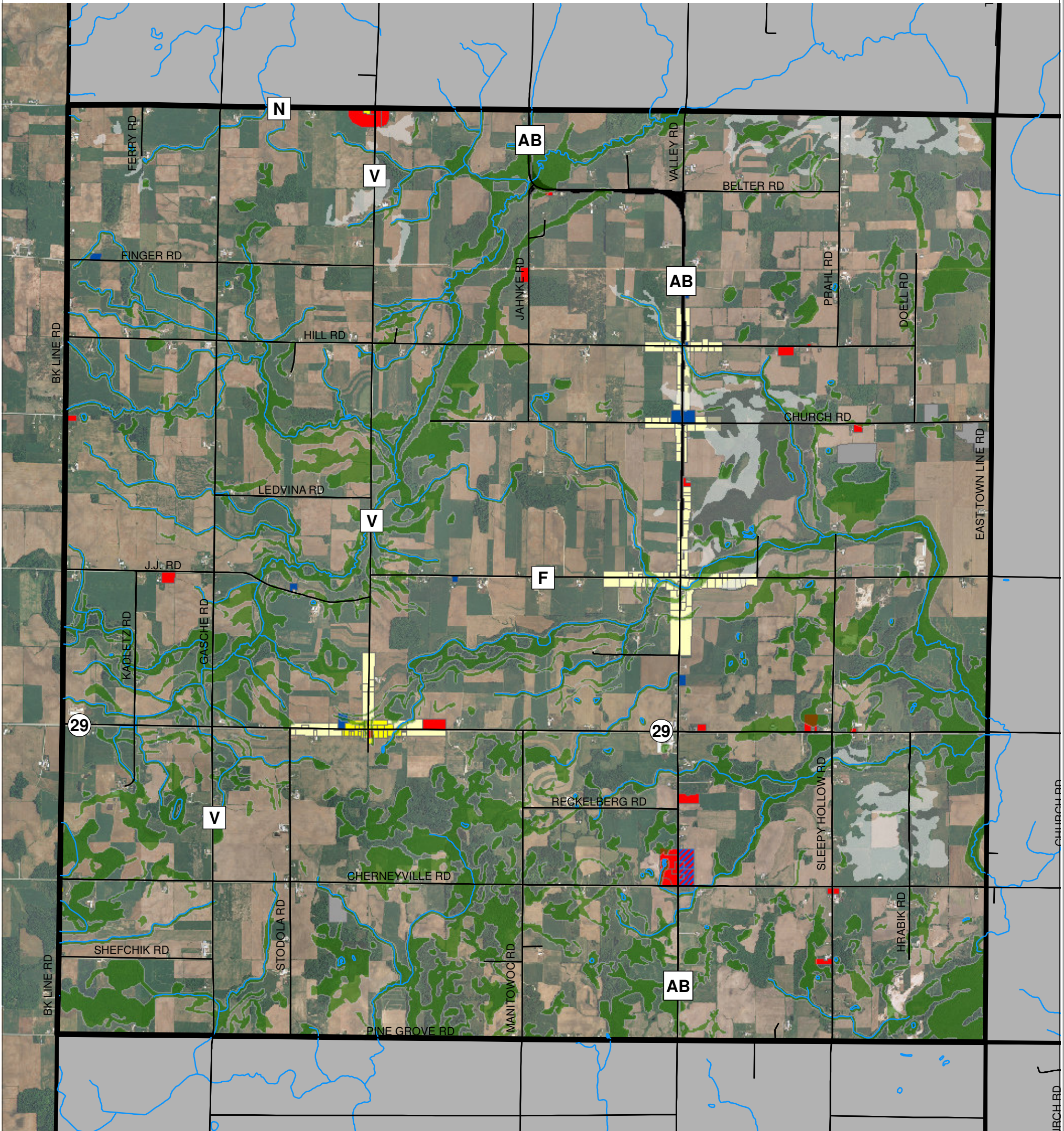


# TOWN OF MONTPELIER

## 2026 FUTURE LAND USE



PROJECT # M11150A04  
DATE: 04/07/05  
DRAWN BY: KAL  
REVISED: 06/20/06

LOCATION: F:\Municipal\Jobs\M11150A04\GIS\DRAWINGS\Montpelier20\_Future\_Land\_Use\_11x17.mxd  
SOURCE: Kewaunee County  
Bay Lake Regional Planning Commission  
Wisconsin DOT

### Legend

- |                          |                                                |
|--------------------------|------------------------------------------------|
| Rivers / Streams         | Gravel Pits                                    |
| Roads                    | Environmental Corridors* (as defined by BLRPC) |
| Agricultural Areas       | Exposed Bedrock                                |
| High Density Housing     | Bedrock Within 2 Feet of Surface               |
| Low Density Housing      | Community Boundaries                           |
| Commercial               | Non-Participating Communities                  |
| Institutional            | Water                                          |
| Proposed Commercial Area |                                                |

**Cross Road Communities**  
(AB & F) - Ellisville  
(AB & Church Rd) - North Ellisville  
(29 & V) - Pilsen

\* DNR wetlands, 100 FEMA floodplains, areas with slopes  $\geq 12\%$ , lakes, rivers, streams and ponds, 75ft lake and river setback, 25ft buffer on wetlands.