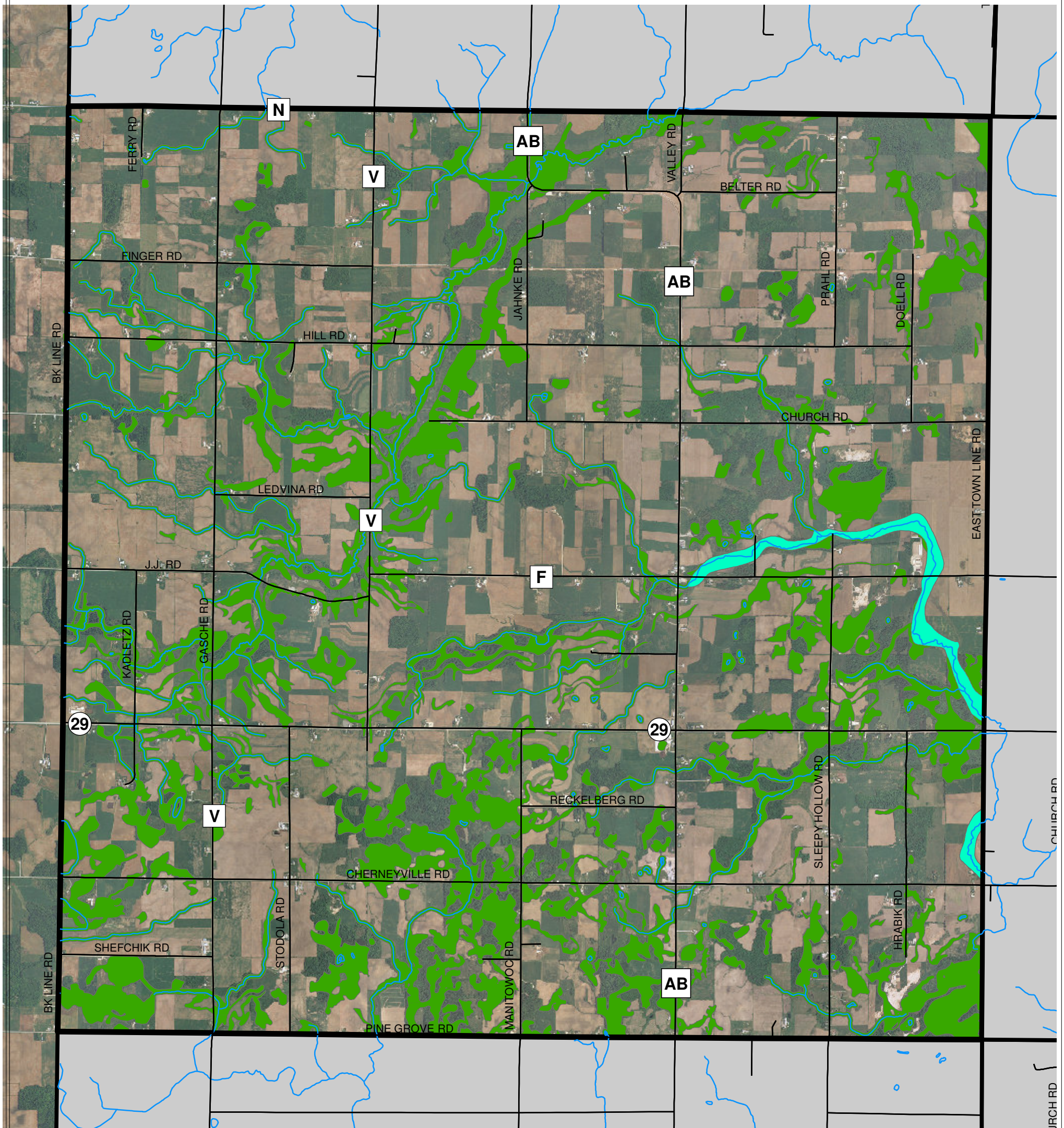


TOWN OF MONTPELIER

NATURAL FEATURES



4,000 2,000 0 4,000 Feet

OMNI
ASSOCIATES

PROJECT # M11150A04
DATE: 05/15/06
DRAWN BY: KAL
REVISED:

ONE SYSTEM DRIVE, APPLETON, WI 54911
PHONE: (920) 756-8800 FAX: (920) 838-6100

LEGEND

- NON-PARTICIPATING COMMUNITIES
- ENVIRONMENTAL CORRIDOR
- FLOODPLAIN
- ROADS
- RIVERS / STREAMS

LOCATION: F:\Municipal\Jobs\M11150A04\GIS\DRAWINGS\MontpelierNatural_11x17.mxd
SOURCE: Kewaunee County
Bay Lake Regional Planning Commission
Wisconsin DOT