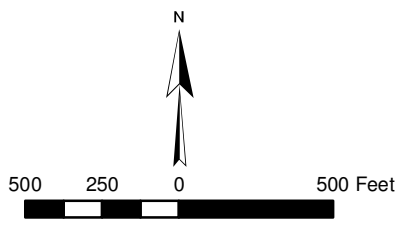
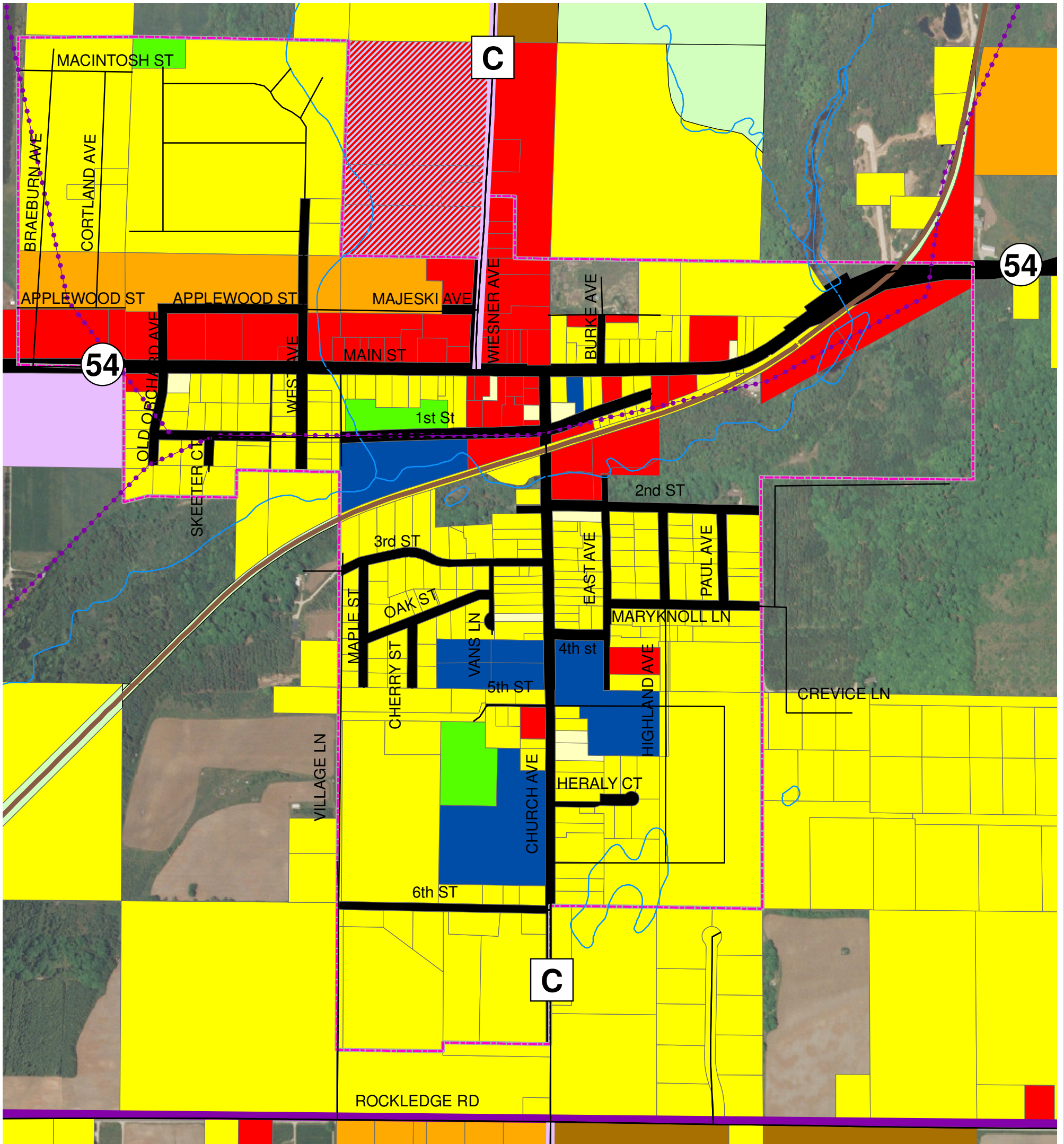


# VILLAGE OF CASCO

## 2026 FUTURE LAND USE



Legend					
	Rivers / Streams		Single family		Commercial
	Roads		Multiple family		Commercial / Office space
	Ahnapee trail		Alternative housing		Commercial / Industrial
	Snowmobile trail		Institutional		Light industrial
	Bike route		Park		Water
	5 ft paved shoulder		Preservation		Village Boundary

LOCATION- F:\Municipal\Jobs\M11150A04\GIS\DRAWINGS\IV\_Casco\20\_Future\_Land\_Use\_11x17.mxd  
 SOURCE: Kewaunee County, Bay Lake Regional Planning Commission, Wisconsin DOT, Village of Casco