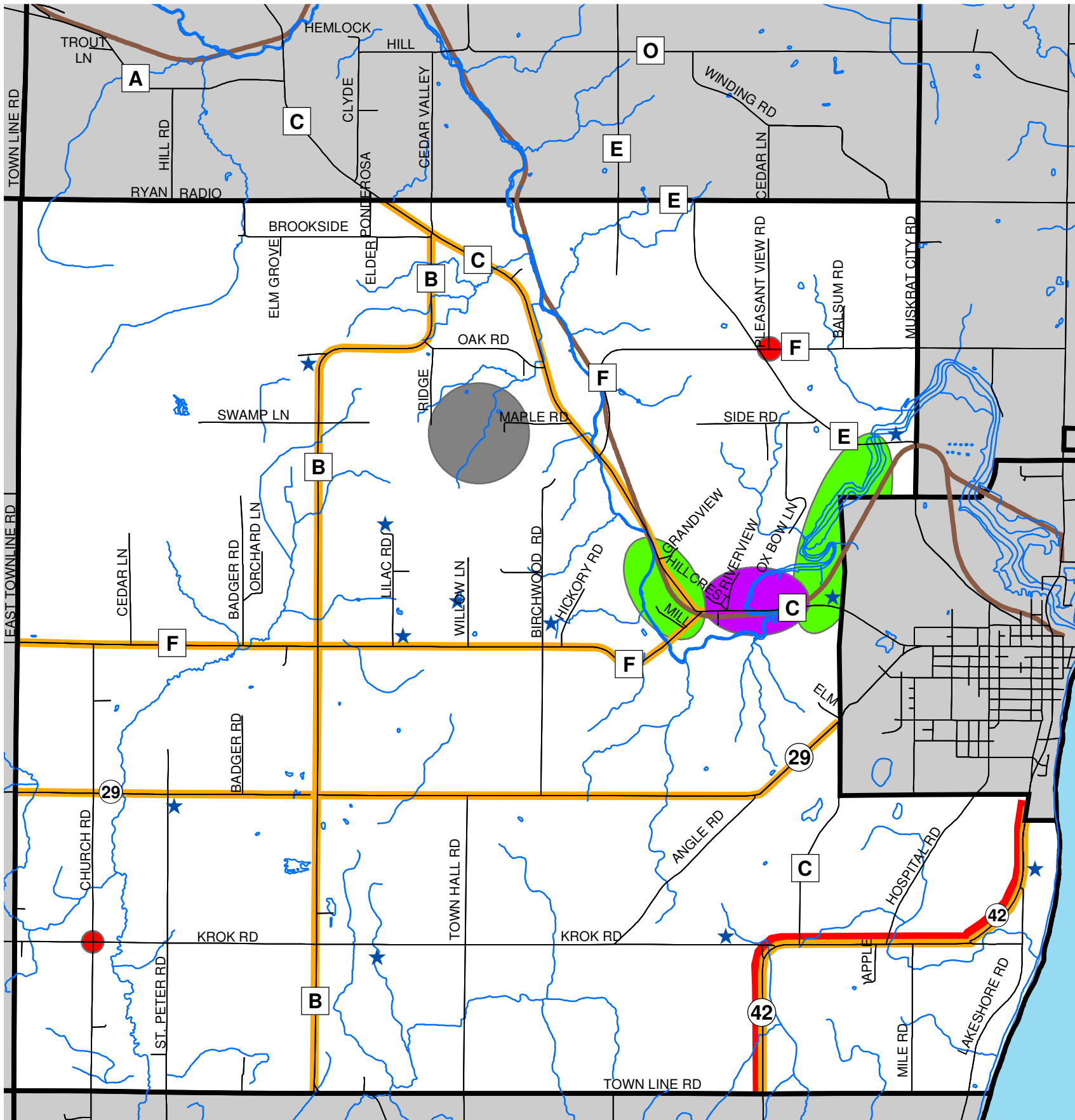


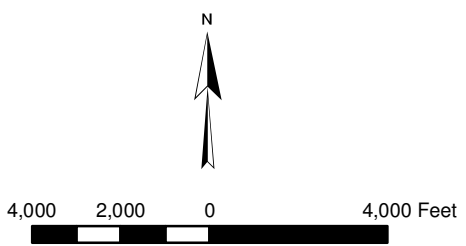
TOWN OF WEST KEWAUNEE

COMPOSITE ATTITUDE MAP



LEGEND

- WEST KEWAUNEE LIMITS
- SURROUNDING TOWNS
- OPEN WATER AREAS
- ATTRACTIVE / SCENIC AREAS
- SPECIAL MEANING AREAS
- TRAFFIC CONCERNS
- LEAST PLEASING
- LOCATION OF PARTICIPANTS
- FREQUENTLY TRAVELED ROADS
- TRAFFIC CONCERNS
- ROADS
- RIVERS/STREAMS
- AHNAPEE TRAIL



OMNI ASSOCIATES

PROJECT # M1150A04
 DATE: 12/07/05
 DRAWN BY: KAL
 REVISED:

ONE SYSTEM DRIVE APPLETON, WI 54911
 PHONE: (920) 755-8800 FAX: (920) 838-6100

LOCATION: F:\Municipal\Jobs\M1150A04\GIS\DRAWINGS\WestKewaunee\Attitude_11x17.mxd
 SOURCE: Kewaunee County
 Bay Lake Regional Planning Commission
 Wisconsin DOT